

Stecca3 **socio cultural center**

Via G. De Castillia 26, 20124 Milano, neighborhood Isola
C.F. 97461750156 | P.IVA: 11217600961 | info@lastecca.org | lastecca.org
Fb: STECCA3 : IG: steccatre

Index

Who we are: Stecca3, Hybrid Sociocultural Space

Who animates the hybrid sociocultural space

Where we are/accessibility: between Isola district, BAM_Biblioteca degli Alberi Park and Porta Nuova

The spaces: uses and sizing

- Between BAM_Biblioteca degli Alberi Milano Park and Isola district
- Flexible Spaces and Dedicated Spaces
- Ground floor and First floor Plan
- Entrance Hall | ground floor
- Laboratory / coworking space | ground floor
- Carpentry Workshop | ground floor
- Bicycle-repair Workshop | ground floor
- Outdoor Staircase and Balcony Loggia | ground floor/first floor
- Paolo Fareri Room | first floor
- Ufficio / Coworking | first floor
- Under Canopy | ground floor outdoor space of pertinence
- Outdoor spaces of pertinence and De Castillia Square (concession with PIDS*)

* PIDS: piccole iniziative diffuse a carattere socio-culturale e di intrattenimento / small, widespread initiatives of a socio-cultural and entertainment nature



STECCA3 | Hybrid Sociocultural Space

1_ Who we are

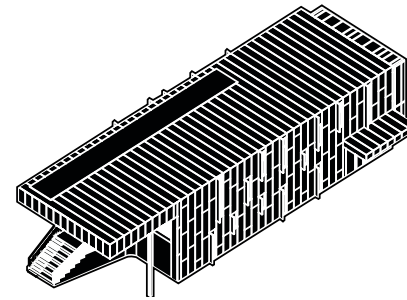
Who we are_ STECCA3 | Hybrid sociocultural space



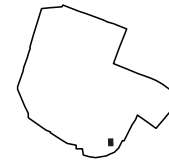
The Stecca3 socio-cultural center is a **home for associations and socio-cultural activities** between the Isola district and Porta Nuova in Milan. It is a **hybrid space** that offers a crossover of contents, opens to a plurality of populations and uses, proposes new cultural formats and moments of aggregation, **attempts to combine innovation and social inclusion**.

The Art Incubator, known as Stecca3, **is a building owned by the Municipality of Milan** of about 760 square meters given to the management of the ADA Stecca association network with a multi-year controlled rental contract, maintenance costs of the building paid by the associations and the sharing of a socio-cultural program with the Public Administration and Municipio 9. The annual program is adapted to accommodate self-organized proximity services subsidiary to public welfare.

Stecca3 is a new contemporary, flexible and adaptable architecture, designed by SBA-Stefano Boeri Architetti in 2007. The building, owned by the municipality, was born as a space for aggregation and self-organized services, part of the urbanization costs of the Porta Nuova real estate development, like the BAM Park-Biblioteca degli Alberi and Casa della Memoria.



Milano - NIL Isola



Isola neighborhood

Dati:

Organization name: ADA Stecca degli Artigiani - Associazione di Associazioni Stecca degli Artigiani

Legal form: Association of associations

Year of birth: 2007

Address: Via G. De Castillia, 26

Website: www.lastecca.org

Neighborhood: Isola

Space under management: new architecture

Space assignment tool: Rent at controlled fee

Activities and services: Territorial animations, Bike workshop, Dance courses, Training courses, Courses and seminars, Sports courses, Co-working, After-school, Events, Social carpentry, Neighborhood info point, Organic food market, Artisan self-production market, Exhibitions, Community gardens and gardens, Rotating multifunctional hall, Listening desk, Job placement desk, Theater, Local guided tours, Cooperation architecture and participatory urban planning.

Main vocation: Center for experimentation and socio-cultural production

Work: paid and voluntary

Activities and services for: Children (4-10), Adults (26-40), Adults (41-55), Adults (56-70) Associations, Foreign communities, Experts, Families, Retired, Non-specific public, Students, *Terzo Settore* (no-profit organizations and workers)

Number of participants/year: from 30,000 to 40,000

Main impact of the project: Social purpose: practices that experiment with new social/welfare services starting from the regeneration of the space - cultural and social mix



STECCA3 | Hybrid sociocultural space

2_ Who anima- tes the hybrid sociocultural space

Who animates the Hybrid sociocultural Space

The socio-cultural center Stecca3 is the headquarters of **ADA Stecca Association of Associations Stecca degli Artigiani**.

ADA Stecca was born from an experience of self-organization and regeneration of abandoned spaces in 2001, to rethink the historic Brown Boveri factory, known as Stecca degli Artigiani, as a Community Center and the relationship between the historic Isola neighborhood and the Garibaldi Repubblica urban void (now Porta Nuova masterplan). After the demolition of the former factory, the network of associations continued its activities for 4 years in prefabricated structures, the temporary Stecca, and then moved to the 3rd Stecca3 building in 2012.

To date, the various areas of intervention in which the resident associations operate are:

Urban Planning and Participatory Architecture with **ASF Italia-Architetti Senza Frontiere Italia** for international cooperation and housing emergency projects, **Temporioso** for territorial regeneration projects and reactivation of abandoned spaces with temporary uses;

Art, craftsmanship and inclusion with the social carpentry **BRICHeco** and **FAME market** team of artisans and designers for a self-production market;

Cultures of sustainable mobility, food and environmental sustainability with the ciclofficina **+bc** laboratories, **AIAB Lombardia - Italian Association for Organic Agriculture**, organizes the weekly organic market and courses, workshops, seminars on social agriculture and biodiversity with the environmentalists of **Legambiente Lombardia**;

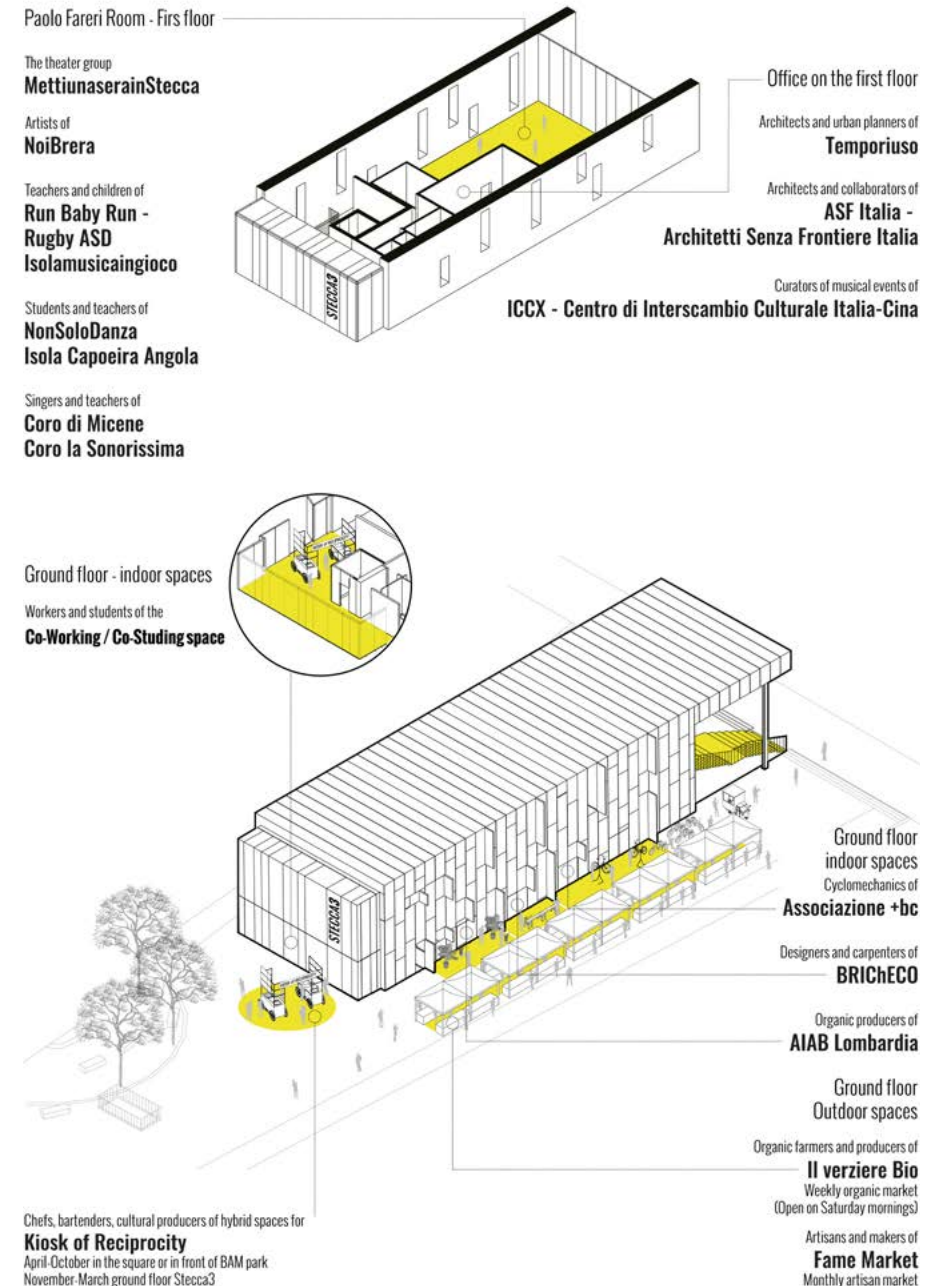
Multicultural and integration with the social enterprise **Vitality only** organizes employability courses, and the curators of musical events **ICCX - Italy-China Exchange Center**;

Performing Art and dance with the **Mettunaserainstecca** theater group, the artists of **NoiBRERA**, the dance teachers **NonSoloDanza**, the capoeira school **Isola Capoeira Angola**, the choirs of **Coro di Micene** and the **Coro la Sonorissima**.

And the journalists of **Zero magazine** with new storytelling of our neighborhoods and beyond.

Other entities, associations, companies, committees, businesses, institutions, informal groups and individuals can propose projects and activities, or even just frequent the spaces of Stecca3 and participate, enriching the calendar every year.

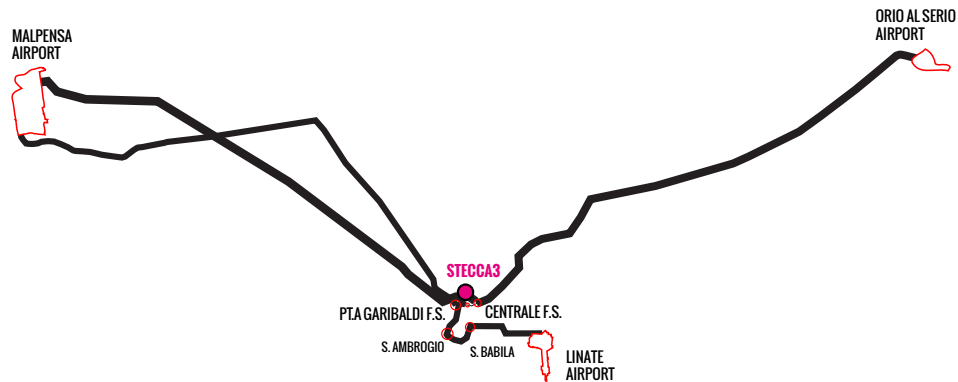
Every year around **30,000 people** pass through, reside and live in Stecca3.



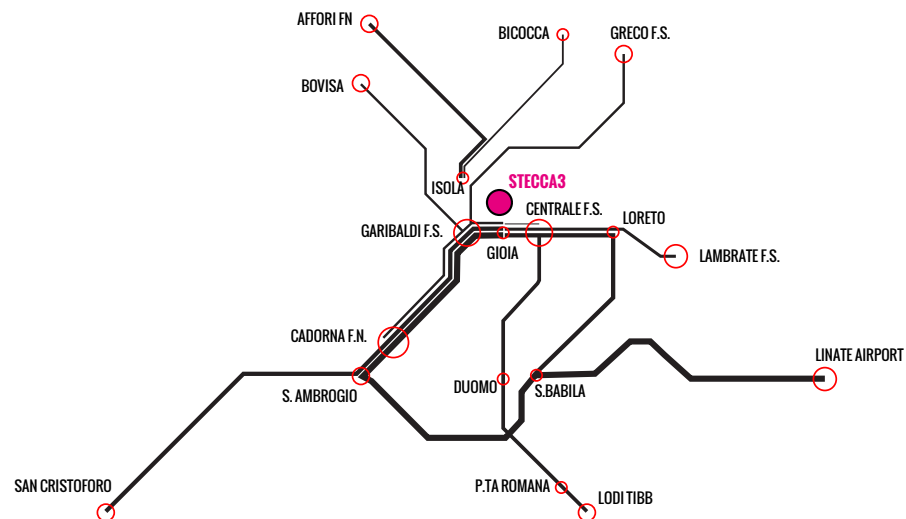


STECCA3 | Hybrid sociocultural Space

3_Where we are / accessibility



Accessibility from airports



Accessibility from the city

Stecca3 accessibility | between Isola district and BAM Park



PHOTO LEGEND:

- 1 Stecca3
- 2 BAM_Biblioteca degli Alberi Park
- 3 Casa della Memoria
- 4 Catella Foundation
- 5 Isola neighborhood
- 6 Bosco Verticale
- 7 IBM Studios
- 8 Gae Aulenti Square

Stecca 3 and the hybrid sociocultural spaces network in Milan. Urban regeneration is now also socio-cultural.

It is ADA Stecca, the Association of Stecca degli Artigiani Associations, a network of associations of cultural and social reason, attentive to the valorization of local contexts, of material and immaterial heritage. ADA Stecca was born in 2007 **from a multi-year experience of creative occupation and self-organization of abandoned spaces** in the former Brown Boveri factory, called “Stecca degli Artigiani” (2001-2006) by a dozen associations, artisans, artists firmly motivated to safeguard and valorize public spaces as common goods, dedicated to local and citizen associationism, to youth aggregation in areas of urban transformation, as well as to the fertile exchange of knowledge between different disciplines and populations.

The ADA Stecca network has been together with the **Stecca degli Artigiani** (the former Tecnomasio Brown Boveri factory) **since 2001-2007**, with the **temporary Stecca** (master plan construction phase) **since 2007-2012** and **with Stecca 3** (officially “Art Incubator”) **since 2012**. A path that in over twenty years has seen the metamorphosis of many associations, artisans and individual residents, which has led ADA Stecca to a new awareness of the importance of a qualitative and professional offer of services to the neighborhood and the city, spaces for a solidarity economy, a collaborative welfare.

In 2017, the ADA Stecca network signed a new contract with the Municipality of Milan (for 12 years until 2029) for the management of the “Art Incubator” space, called Stecca3. As of today in 2025, the entities present throughout the year and representing the different areas of intervention are **16**, while over **50** associations are hosted on rotation, informal groups, students, professionals, who together produce over **200** annual activities, including events, courses, self-organized and often free (or at least accessible) services for the neighborhood, the city, and also an international audience.

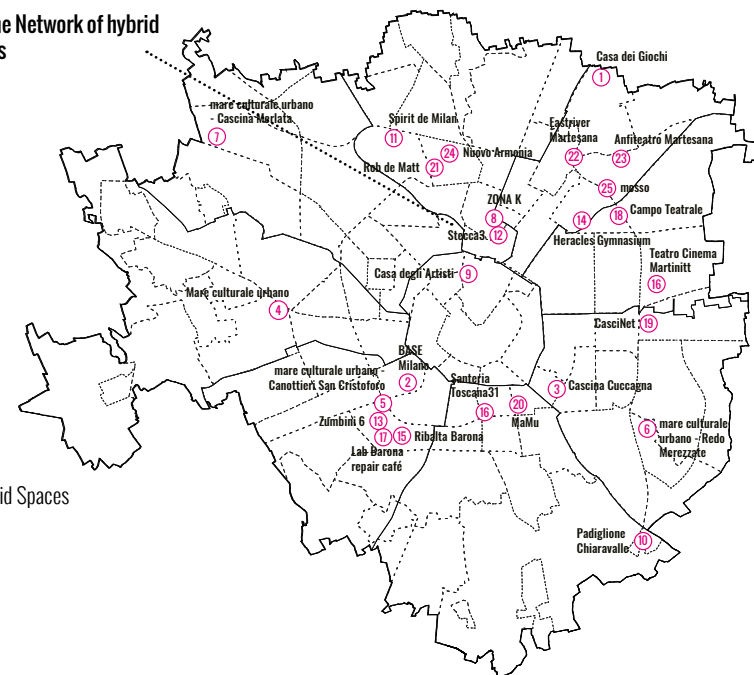
How to regenerate abandoned spaces and large areas undergoing transformation? Stecca is a pioneering reality that since 2001 has believed in a **socio-cultural regeneration process**, where the outcome of a transformation is a new evolutionary landscape capable of maintaining and reusing pre-existing buildings, but also demolishing and rebuilding new architectures for care communities and networks of associations capable of returning self-organized services to the territory, part of a social capital and collaborative welfare. **New hybrid spaces, buildings and socio-cultural realities as care infrastructures for a city of proximity.**

Stecca3 is part of an informal network of hybrid spaces in Milan, born in 2020 during the long months of continuous lockdown: spaces that have proven to be fundamental for creating and encouraging proximity relationships, collaborative welfare services and solidarity economy (Cacciari, 2016), to be as inclusive as possible. Following the recognition in September 2022 with the first **National Resolution (N. 1231 of L 24/09/2021)** of the Municipality of Milan, Stecca3 is now part of the Qualified List “**Network of Hybrid Spaces of the City of Milan**”.

Stecca3 is part of the Network of hybrid sociocultural spaces

LEGEND:

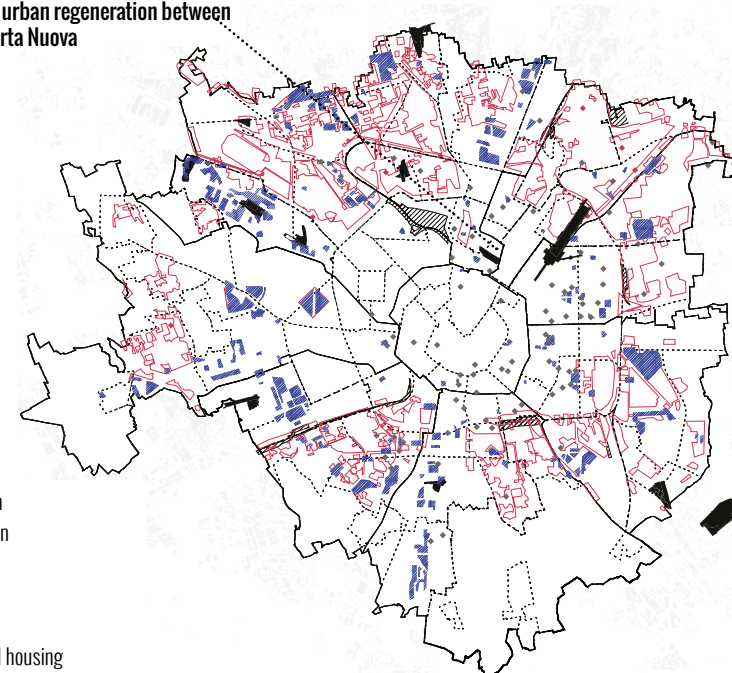
○ Sociocultural Hybrid Spaces



Stecca3 is a hub for urban regeneration between Isola, Parco BAM, Porta Nuova

LEGEND:

□ Neighborhood Plan
 □ Urban Regeneration
 □ Railway projects
 ■ Knots
 ■ Social Housing
 ■ Provision for social housing
 ■ University residences

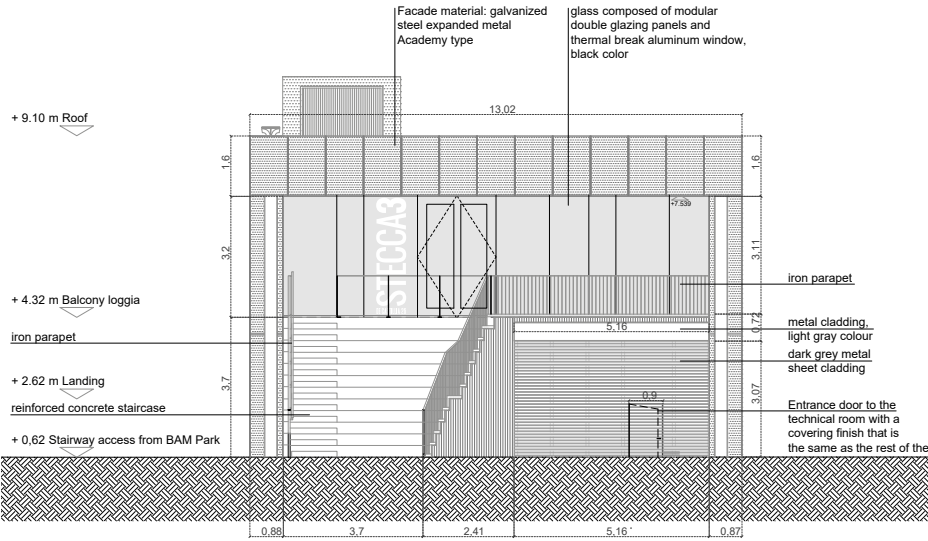




STECCA3 | Hybrid sociocultural Space

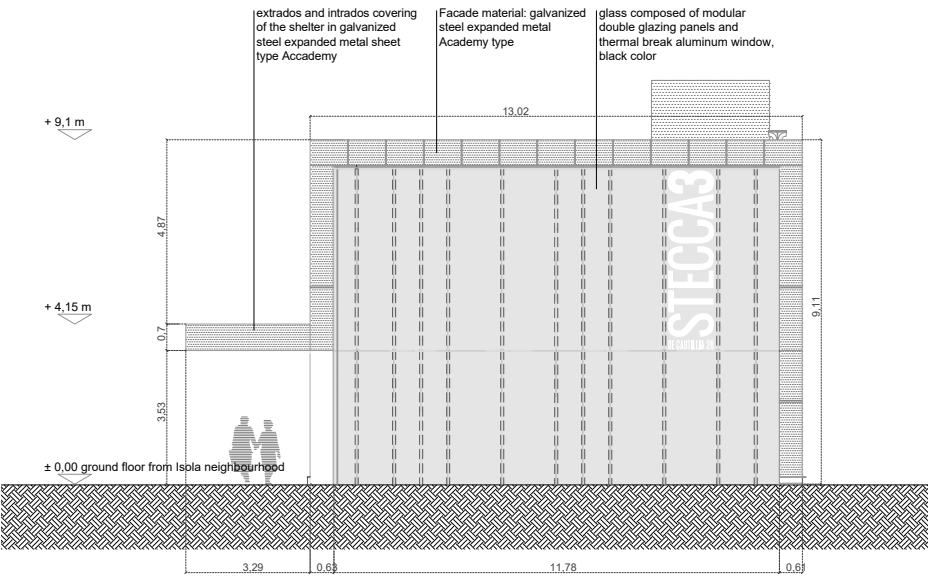
4_The spaces

STECCA3 | Facing BAM Park and Isola district



SOUTH Elevation | BAM Park Front

Scale 1:200 0 1 2m

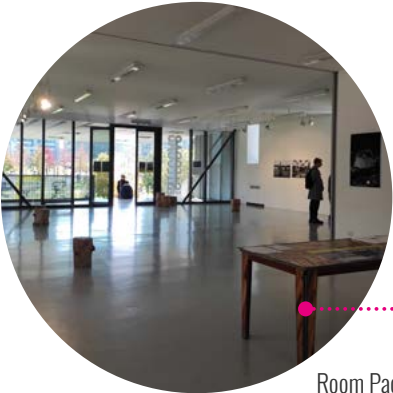


NORTH Elevation | Isola District Front

Scale 1:200 0 1 2m



FLEXIBLE SPACES AND DEDICATED SPACES



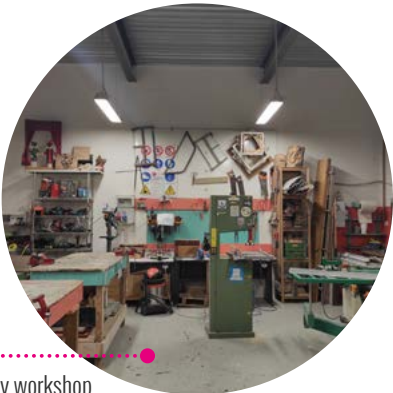
Room Paolo Fareri



Office and Coworking



Entrance Hall



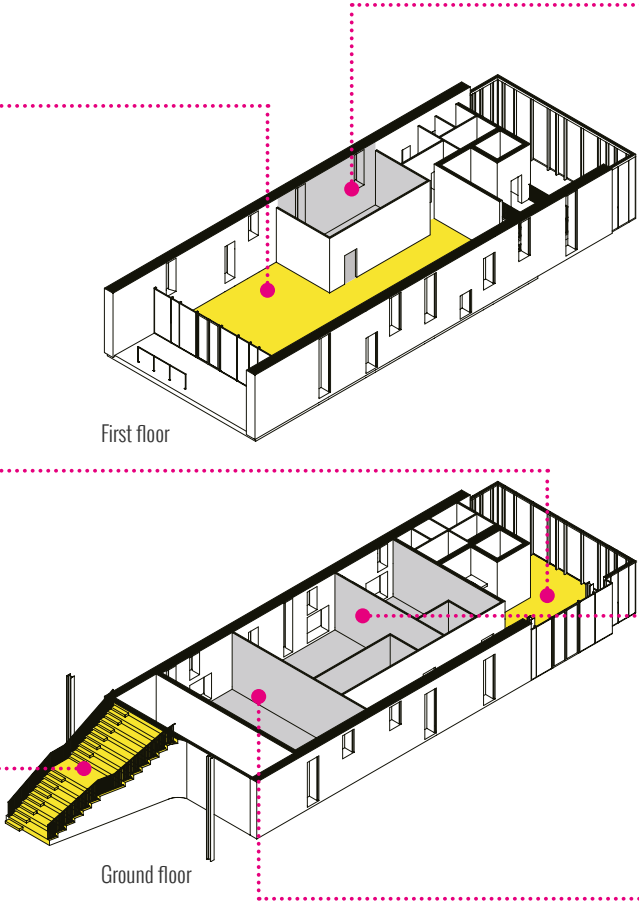
Carpentry workshop



Staircase
facing the park

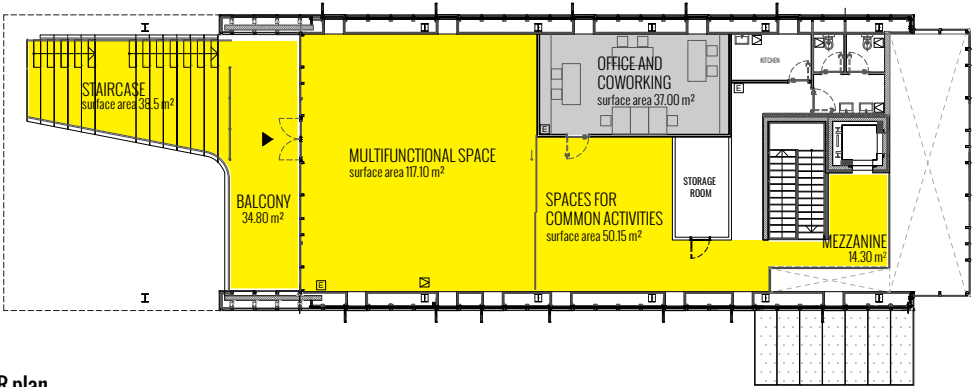


Cycle-repair workshop

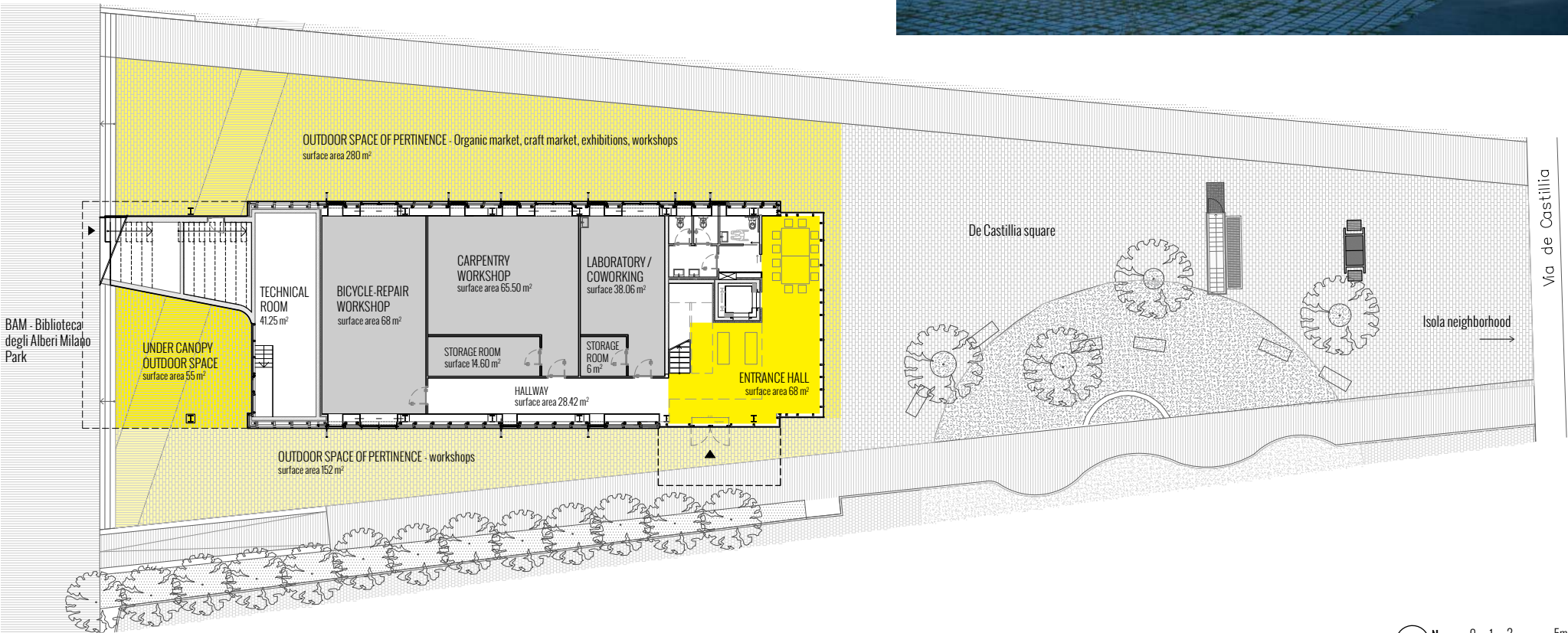


LEGEND:
● Flexible spaces
● Dedicated spaces

STECCA3 | Ground floor and first floor plans

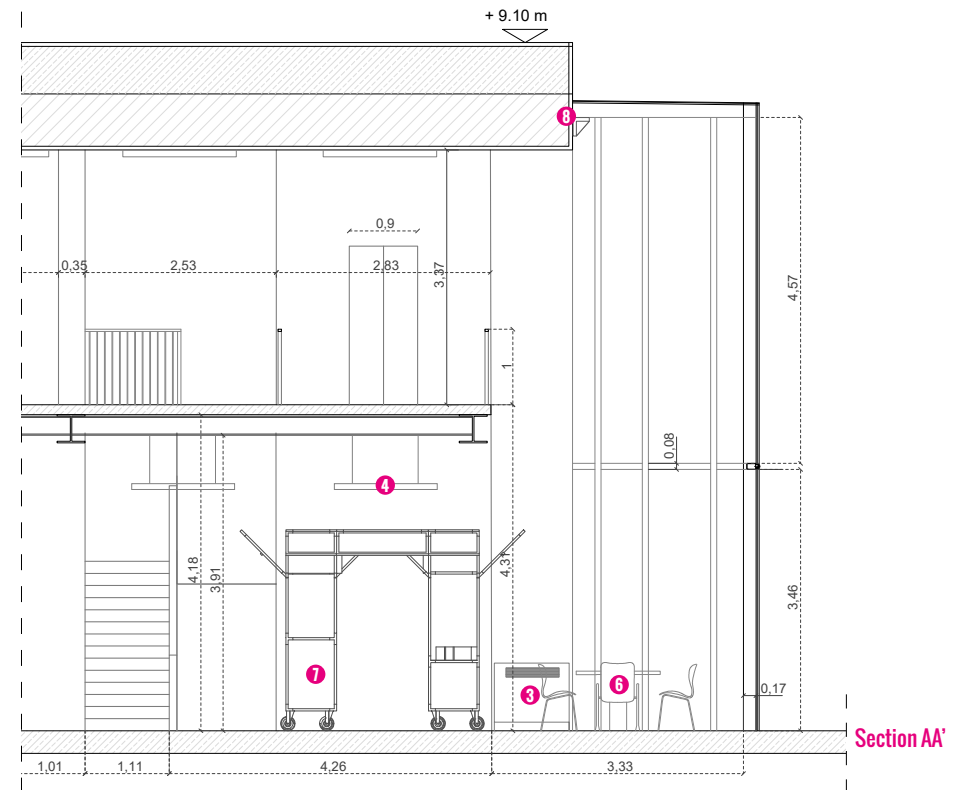
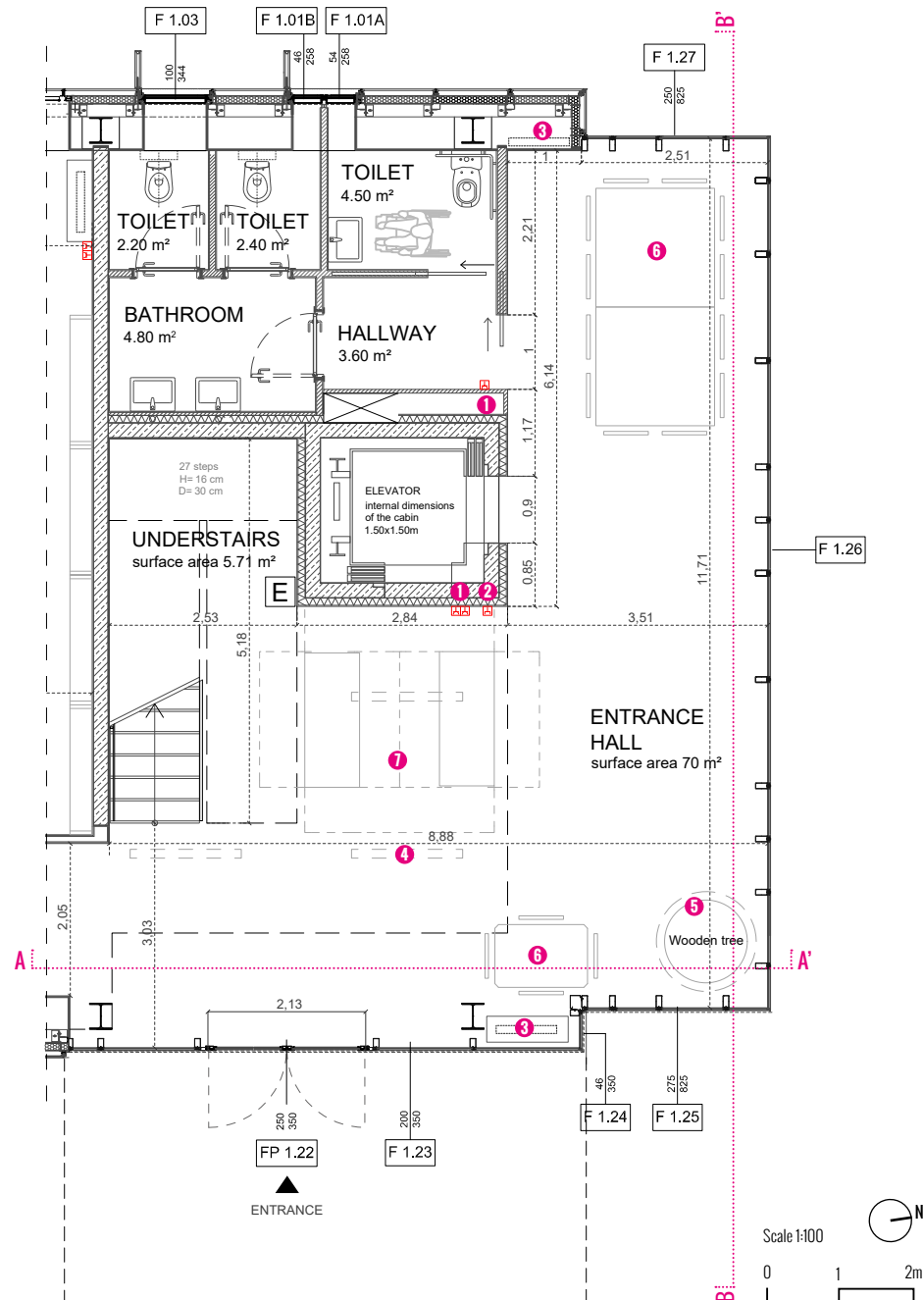


FIRST FLOOR plan



GROUND FLOOR plan

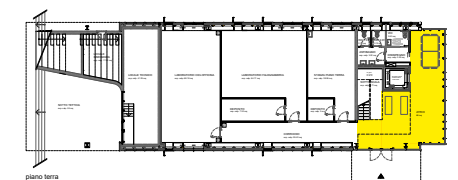
ENTRANCE HALL | Ground floor



LEGEND:

- 1 n.3 220 V electrical sockets
- 2 n.1 Ethernet socket
- 3 n.2 Fan Coil heating/cooling
- 4 n.3 Lamps (Disano 984 Forma UV-A)
- 5 Sculpture Tree in wood - fixed
- 6 n.3 Work tables and furniture - removable
- 7 Kiosk of Reciprocity - removable
- 8 n.4 Headlights (Disano Rodio)

Entrance Hall = 68,1 m²



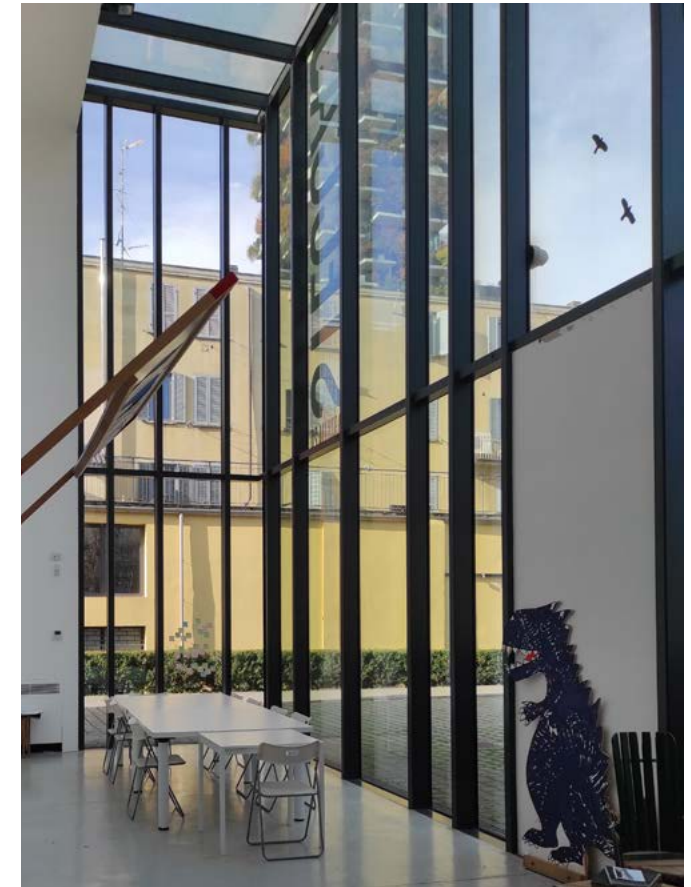
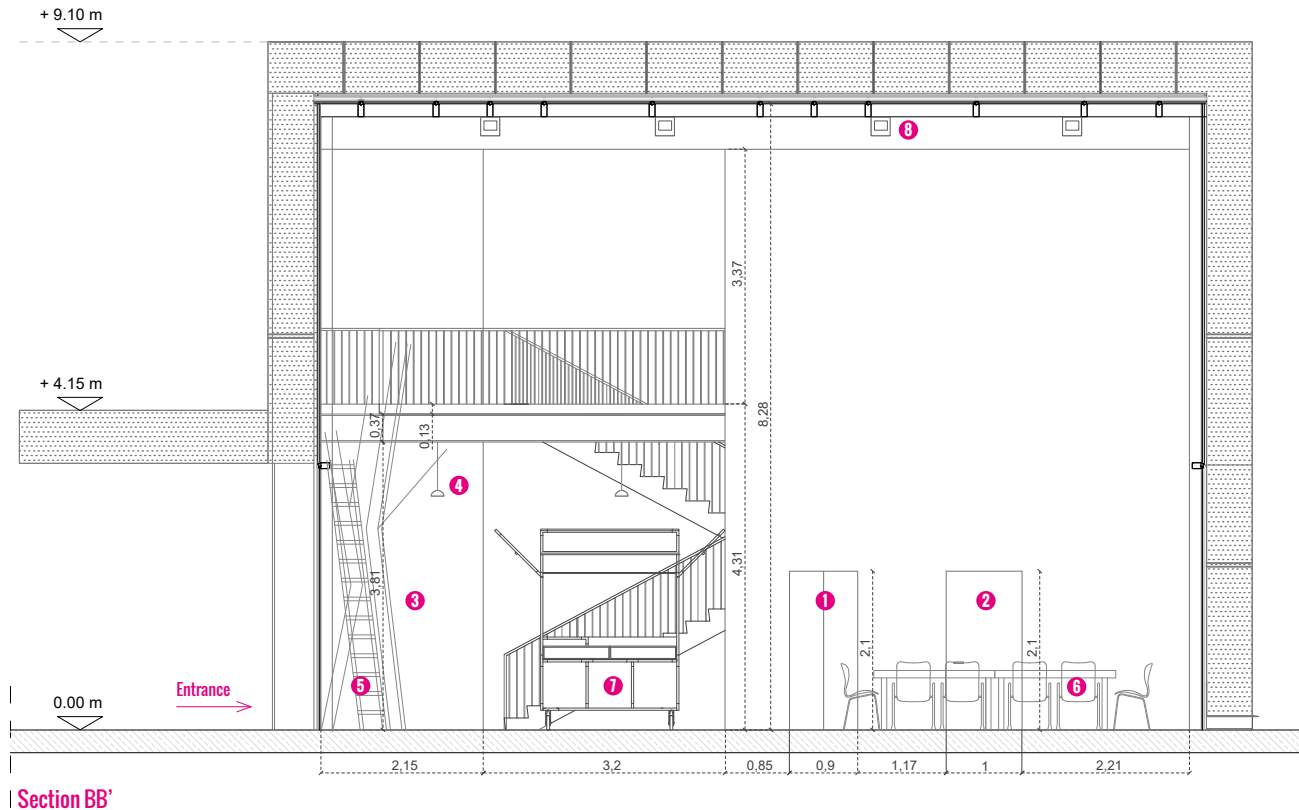
Stecca3_ground floor / piano terra

SERVICES/FACILITIES:



*WiFi with dedicated fiber

ENTRANCE HALL | Ground floor



LEGEND:

- 1 Elevator
- 2 Bathrooms
- 3 Curtain towards the laboratory hallway
- 4 n.3 Lamps (Disano 984 Forma UV-A)
- 5 Wooden Tree Sculpture - fixed
- 6 n.3 Work tables and furniture - removable
- 7 Kiosk of Reciprocity - removable
- 8 n.4 Headlights (Disano Rodio)

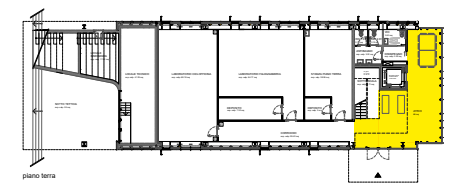
SERVICES/FACILITIES:



*WiFi with dedicated fiber

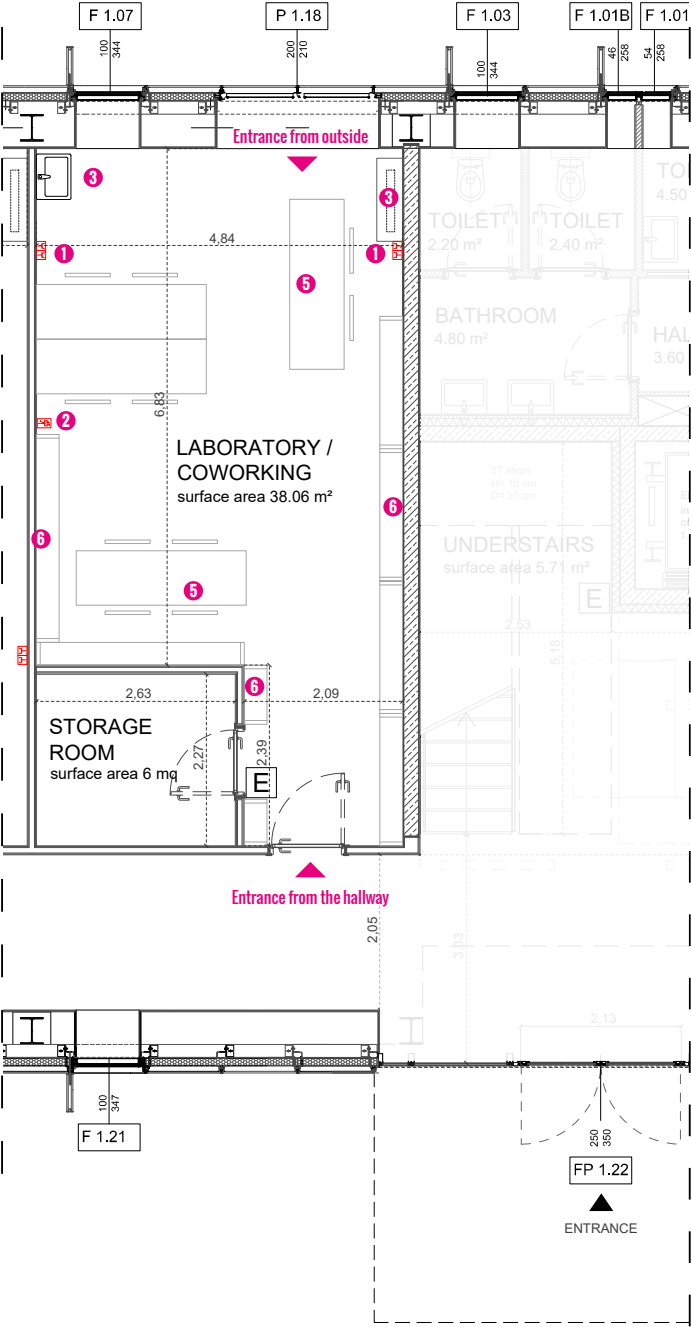
Scale 1:100

Entrance Hall = 68,1 m²



Stecca3_ ground floor / piano terra

LABORATORY / COWORKING | Ground floor



LEGEND:

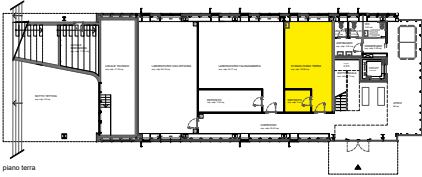
- 1 n.4 Electrical sockets 220 V
- 2 n.3 Industrial electrical socket 380 V
- 3 n.1 Fan Coil heating/cooling
- 4 n.1 Sink
- 5 n.3 Work tables and furniture - removable
- 6 Shelving - fixed

SERVICES/FACILITIES:

Electricity WiFi* Air conditioning Sink 2 TV/monitor Industrial electrical socket

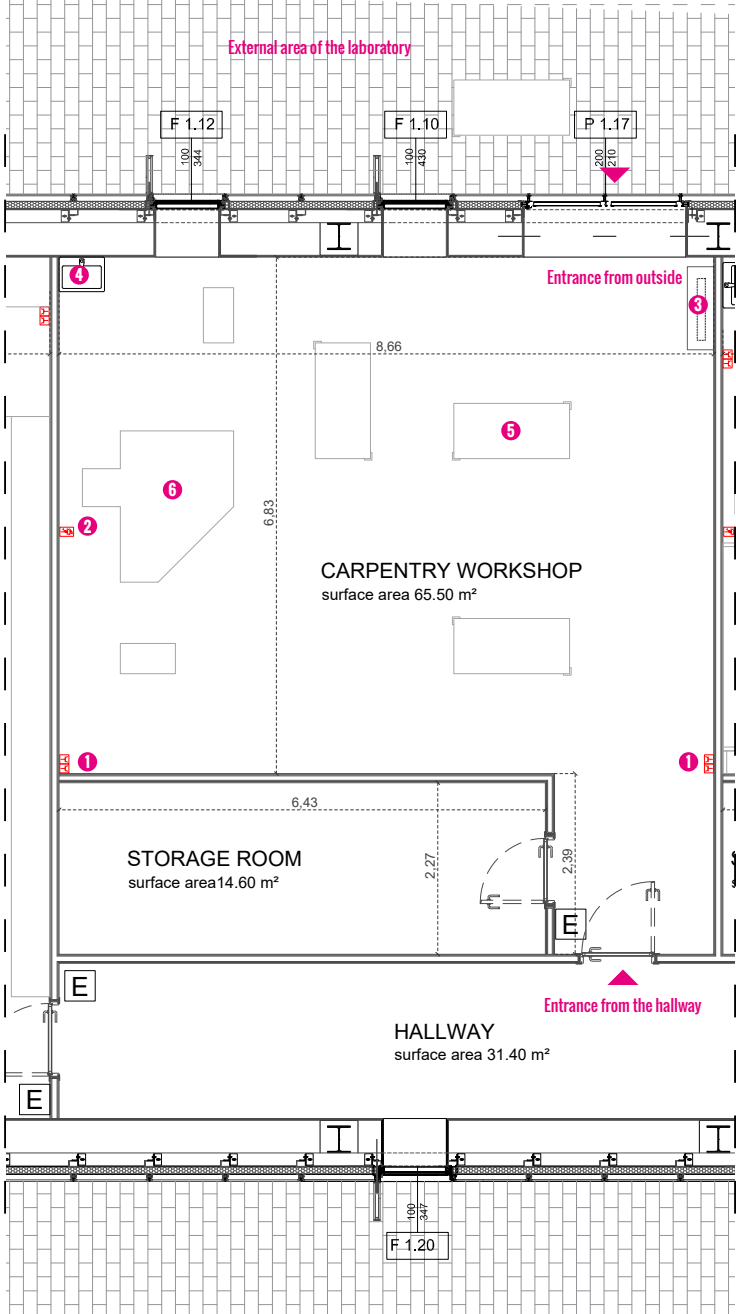
*WiFi with dedicated fiber

Laboratory / Coworking = 38 m²



Stecca3_ ground floor / piano terra

CARPENTRY WORKSHOP | Ground floor



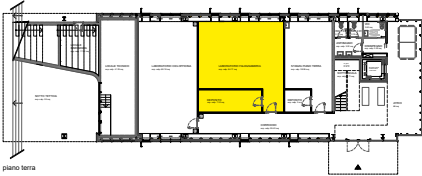
LEGEND:

- 1 n.4 electrical sockets 220 V
- 2 n.3 industrial electrical socket 380 V
- 3 n.1 Fan Coil heating/cooling
- 4 n.1 Sink
- 5 n.3 Work tables
- 6 Carpentry machinery:
 - n.1 lathe
 - n.1 circular saw
 - n.1 mitre saw
 - n.1 combined: Saw and wire thickness planer
 - n.1 cutter table
 - n.1 band saw
 - n.1 drill press

SERVICES/FACILITIES:

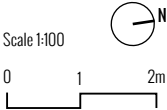
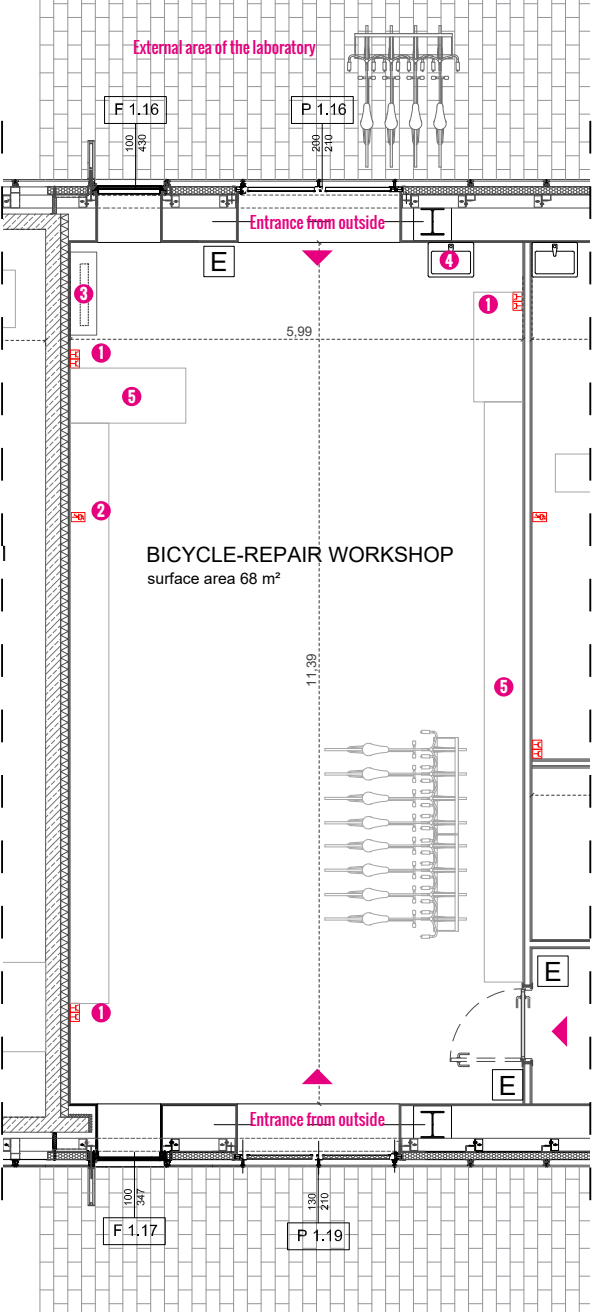
- Electricity
 - WiFi*
 - Air conditioning
 - Sink
 - Industrial electrical socket
- *WiFi with dedicated fiber

Carpentry workshop = 65,5 m²



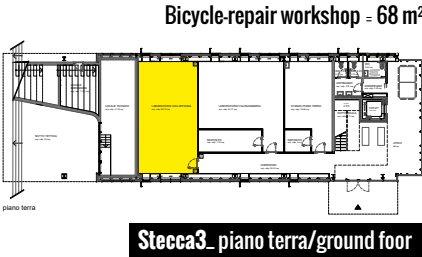
Stecca3_ ground floor / piano terra

BICYCLE-REPAIR WORKSHOP | Ground floor

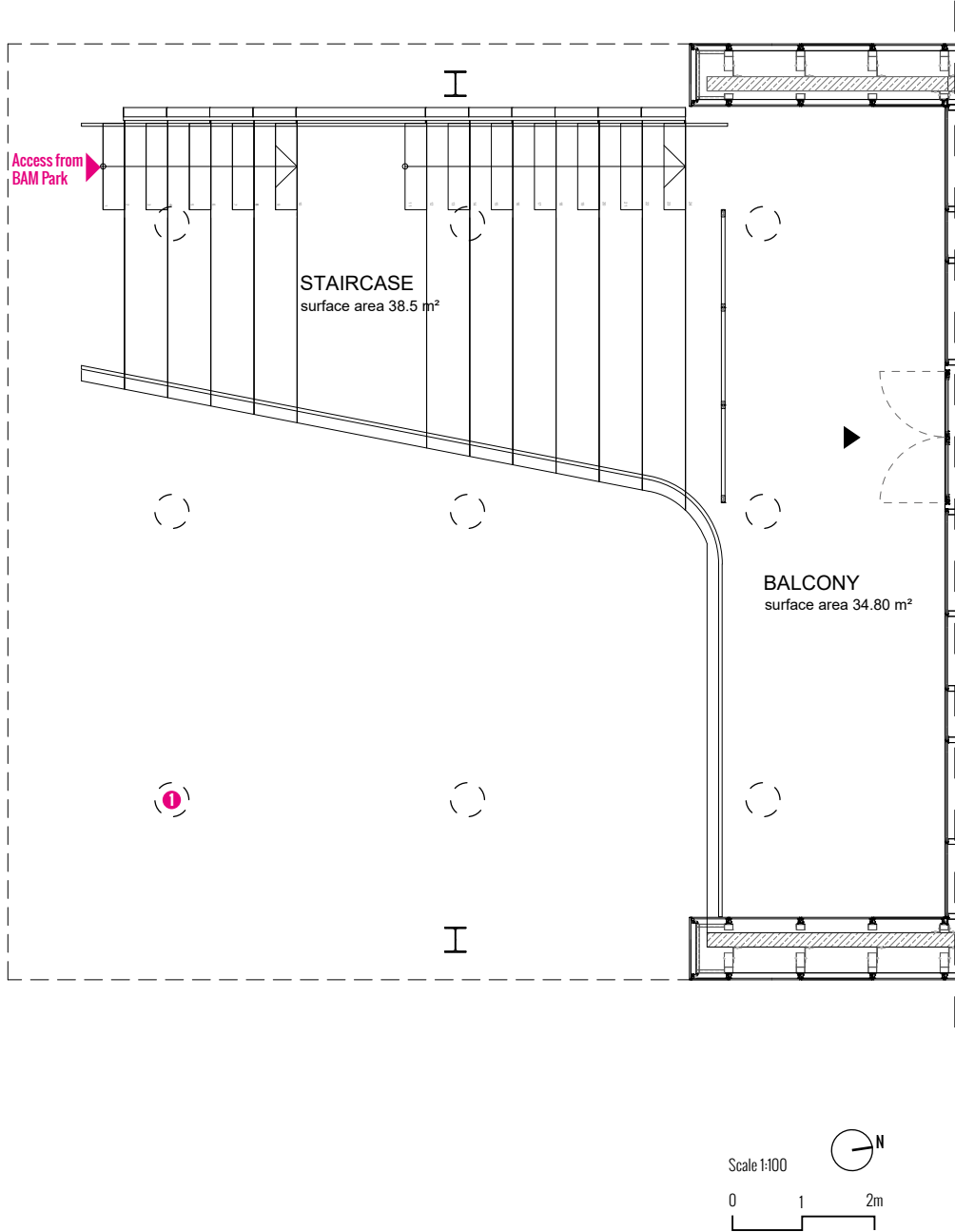


- LEGEND:**
- 1 n.6 Electrical sockets 220 V
 - 2 n.3 Industrial electrical socket 380 V
 - 3 n.1 Fan Coil heating/cooling
 - 4 n.1 Sink
 - 5 Shelving / Work tables / bicycle workshop equipment

- SERVICES/FACILITIES:**
- Electricity
 - WiFi*
 - Air conditioning
 - Sink
 - Industrial electrical socket
- *WiFi with dedicated fiber



OUTDOOR STAIRCASE and BALCONY LOGGIA | First floor



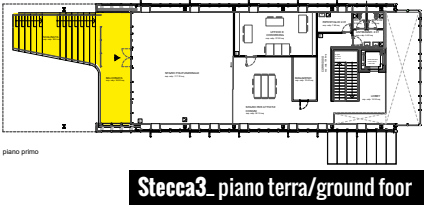
Openair Staircase = 38,5 m²
Balcony loggia = 34 m²
TOT = 72,5 m²

LEGEND:

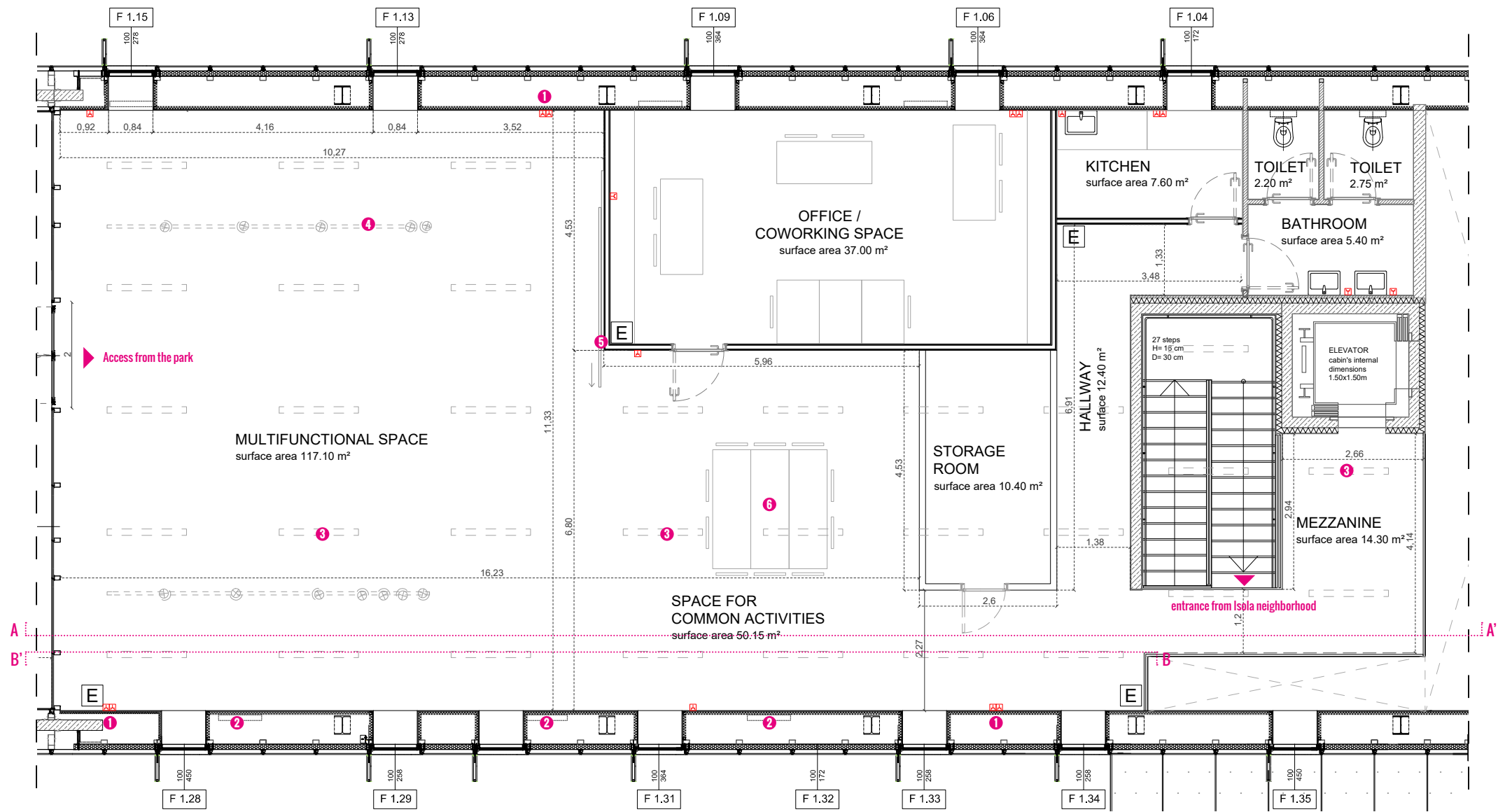
- Tempered glass diffuser light - night lighting

SERVICES/FACILITIES:

- Electricity
- WiFi*



PAOLO FARERI ROOM | First floor



LEGEND:

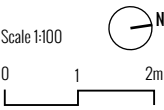
- 1 n.9 200 V electrical sockets
- 2 n.2 Fan Coil heating/cooling
- 3 n. 33 linear ceiling lights
- 4 n.2 Tracks with 5 adjustable spotlights (prilux-voltore|LED 13W 830 45o)

SERVICES/FACILITIES:

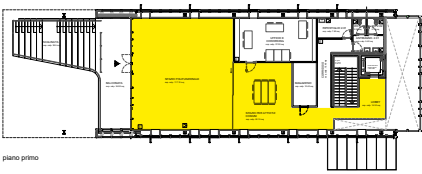
- 5 Sliding door partition
- 6 Work tables and furniture - removable

Electricity WiFi* Toilets Air conditioning Projector 2 TV/monitor

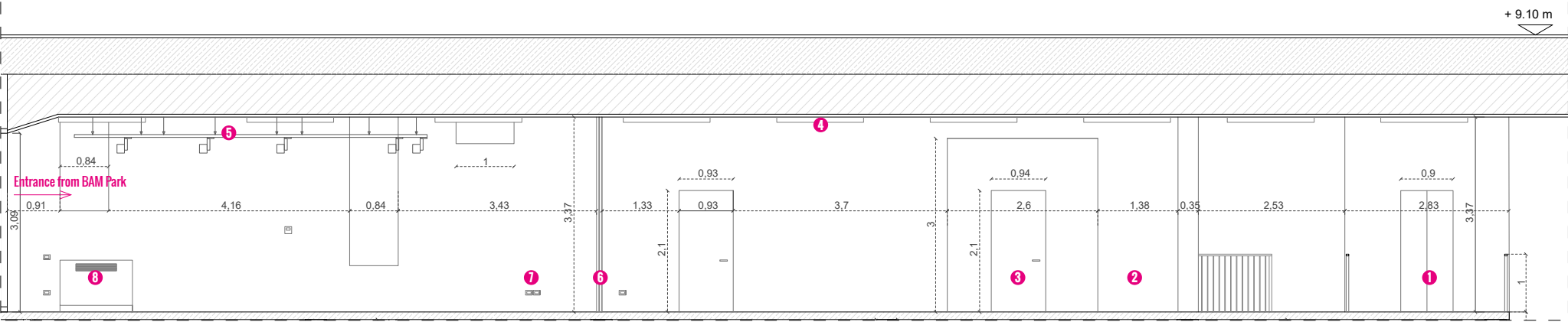
*WiFi with dedicated fiber



Paolo Fareri Room = 182 m²
Balcony loggia = 34 m²
Stecca3_ first floor/primo piano



PAOLO FARERI ROOM | First floor



Section AA'



LEGEND:

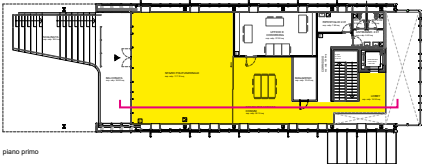
- 1 Elevator
- 2 Access to bathrooms
- 3 Warehouse
- 4 Linear ceiling lights
- 5 Track with 5 adjustable spotlights (prilux-voltore LED 13W 830 45°)
- 6 Sliding door partition
- 7 200 V electrical sockets
- 8 Fan Coil heating/cooling

SERVICES/FACILITIES:



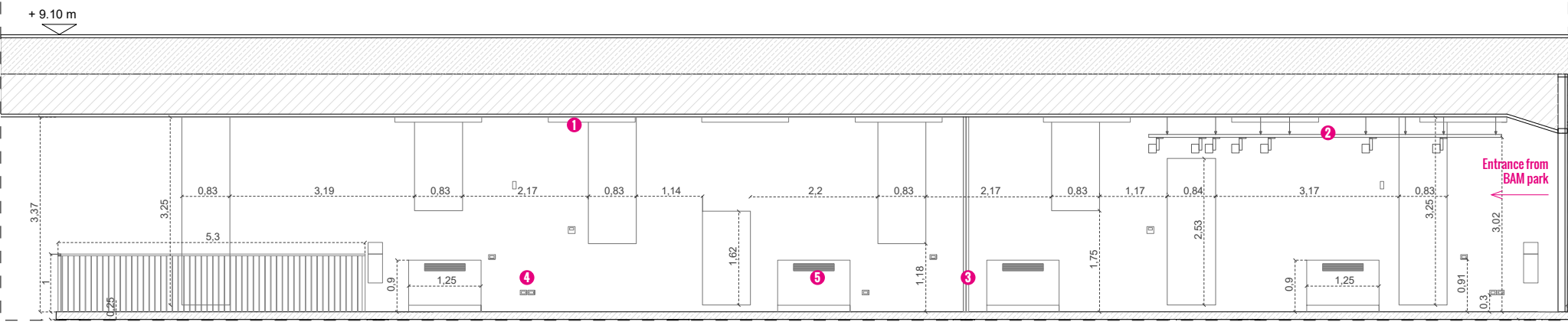
Scale 1:100 0 1 2m

Paolo Fareri Room = 182 m²



Stecca3_ first floor /primo piano

PAOLO FARERI ROOM | First floor



Section BB'



LEGEND:

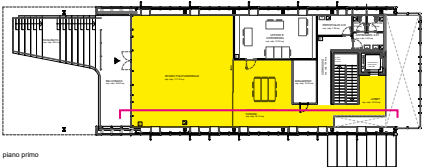
- 1 Linear ceiling lights
- 2 Track with 5 adjustable spotlights (prilux-voltore LED 13W 830 45°)
- 3 Sliding door partition
- 4 200 V electrical sockets
- 5 Fan Coil heating/cooling

SERVICES/FACILITIES:

- Electricity
- Toilets
- WiFi*
- Air conditioning
- Projector
- 2 TV/monitor

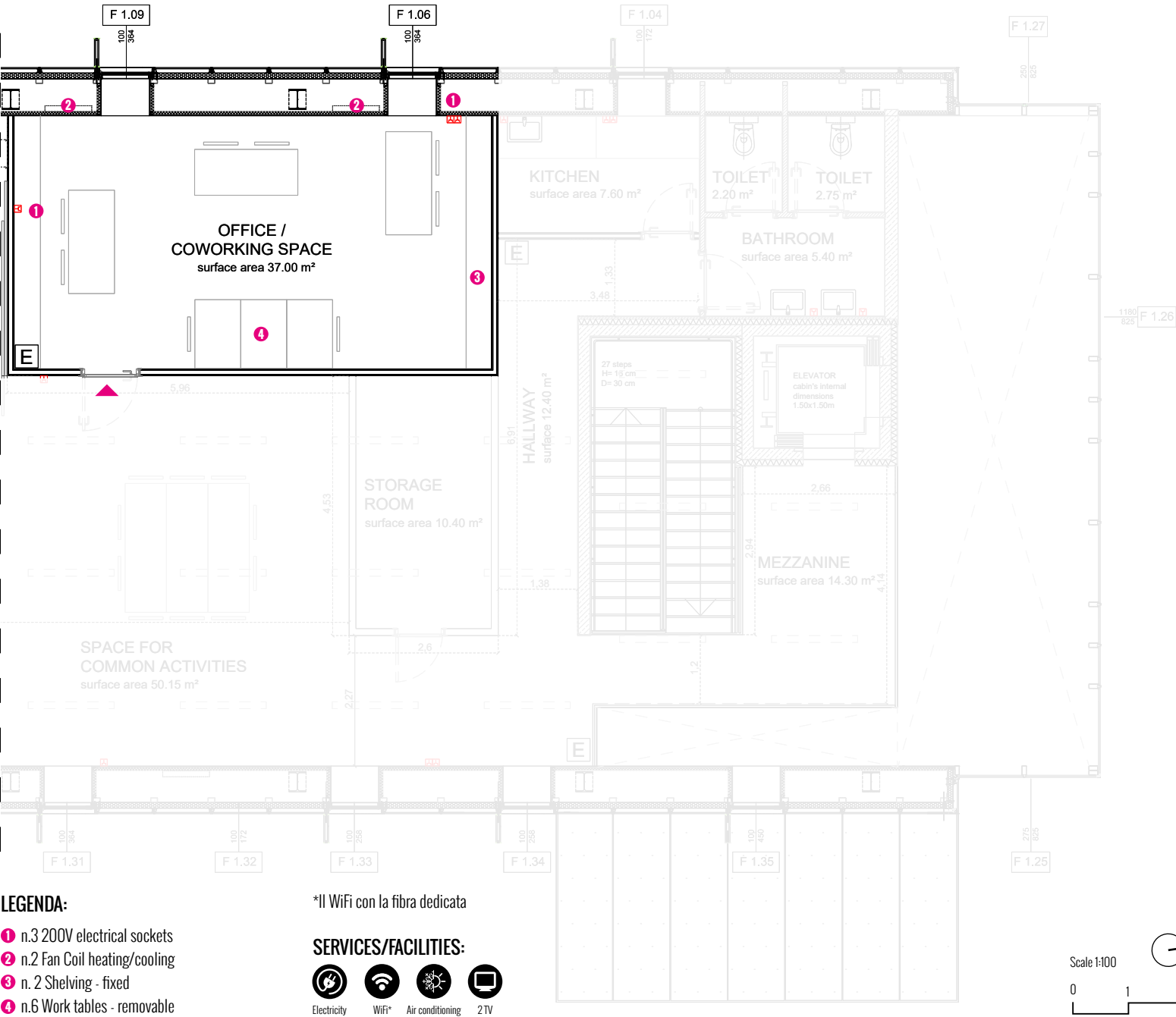
Scale 1:100 0 1 2m

Paolo Fareri Room = 182 m²



Stecca3_ first floor /primo piano

OFFICE and COWORKING SPACE | First floor



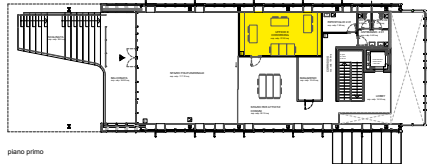
- LEGENDA:**
- 1 n.3 200V electrical sockets
 - 2 n.2 Fan Coil heating/cooling
 - 3 n. 2 Shelving - fixed
 - 4 n.6 Work tables - removable

*Il WiFi con la fibra dedicata

SERVICES/FACILITIES:

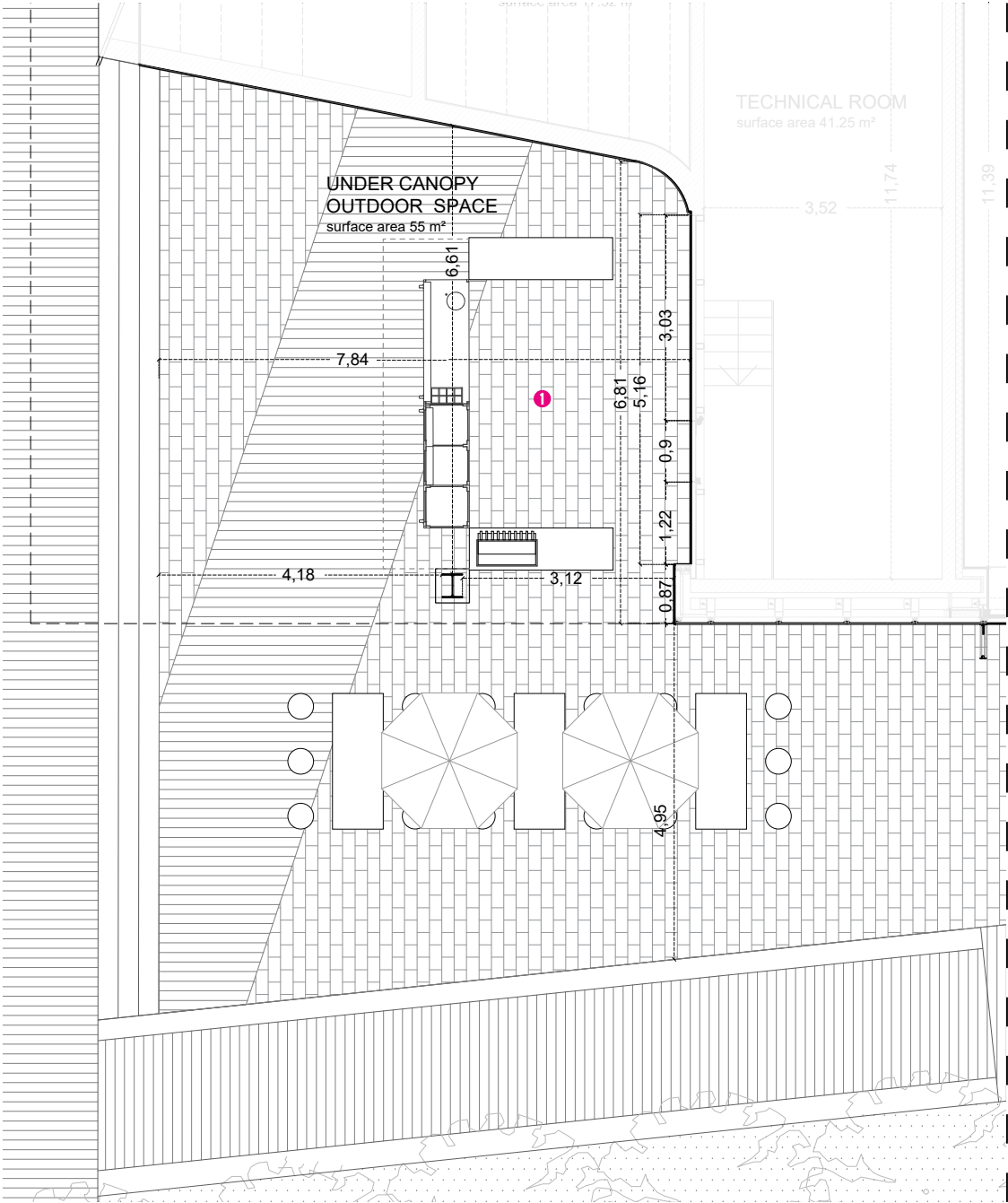


Office / Coworking space = 37 m²



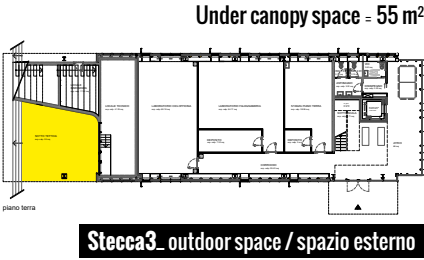
Stecca3_ first floor /primo piano

UNDER CANOPY | Ground floor outdoor space of pertinence

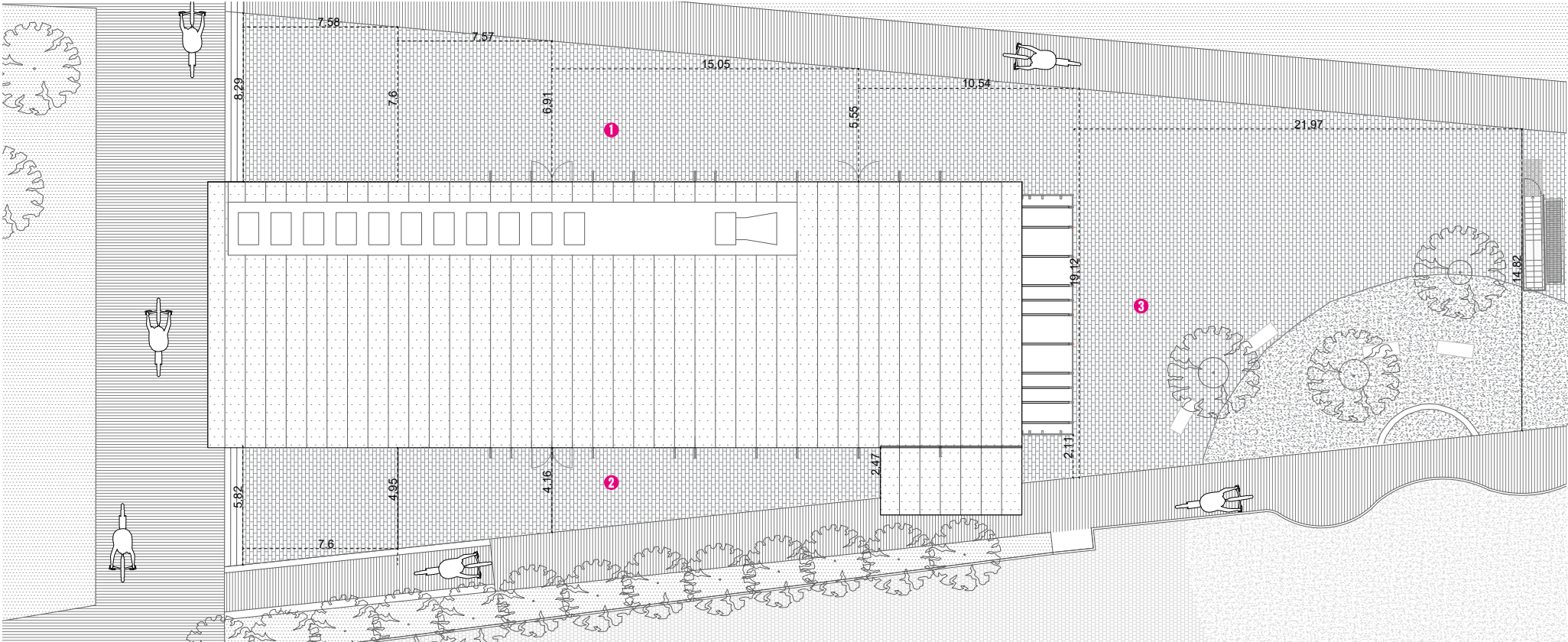


LEGEND:
 ❶ Kiosk of Reciprocity - removable

SERVICES/FACILITIES:
 Electricity
 WiFi
 Water connection



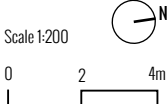
OUTDOOR SPACE



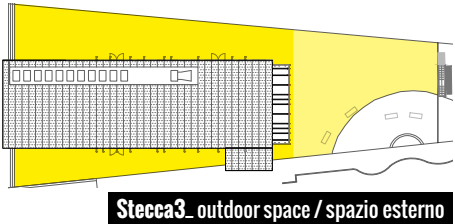
LEGEND:

- 1 Outdoor space of pertinence - exhibitions, workshops, markets
- 2 Outdoor space of pertinence - public events, workshops
- 3 G.de Castilla Square - space subject to public land concession

SERVICES/FACILITIES:



Outdoor space - exhibitions, workshops, markets - 256,62 m²
Outdoor space-public events, workshops - 152 m²
G.de Castilla Square - 196.9 m²





STECCA3
DE CASTILLIA 26

Stecca3 sociocultural center

Via G. De Castilia 26, 20124 Milano, Isola neighborhood
C.F. 97461750156 | P.IVA: 11217600961 | info@lastecca.org | lastecca.org
Fb: STECCA3 | IG: steccatre
Metro MM2 Garibaldi, MM2 Gioia, MM5 Isola,
Bus 43, 60, 81; Tram 7, 9, 10, 31, 33;
Garibaldi Train Station (S1, S2, S5, S6, S8, S9, S10, S11, S13,
MXP Malpensa Express) or by bike